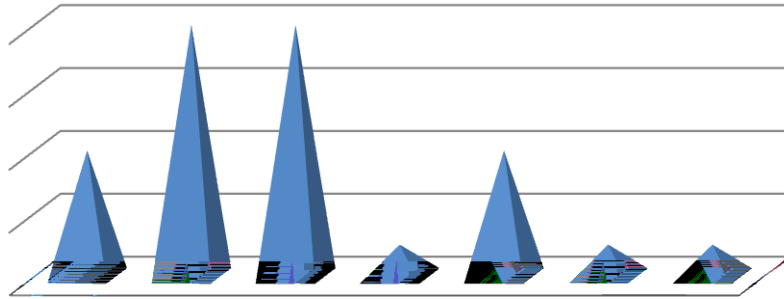
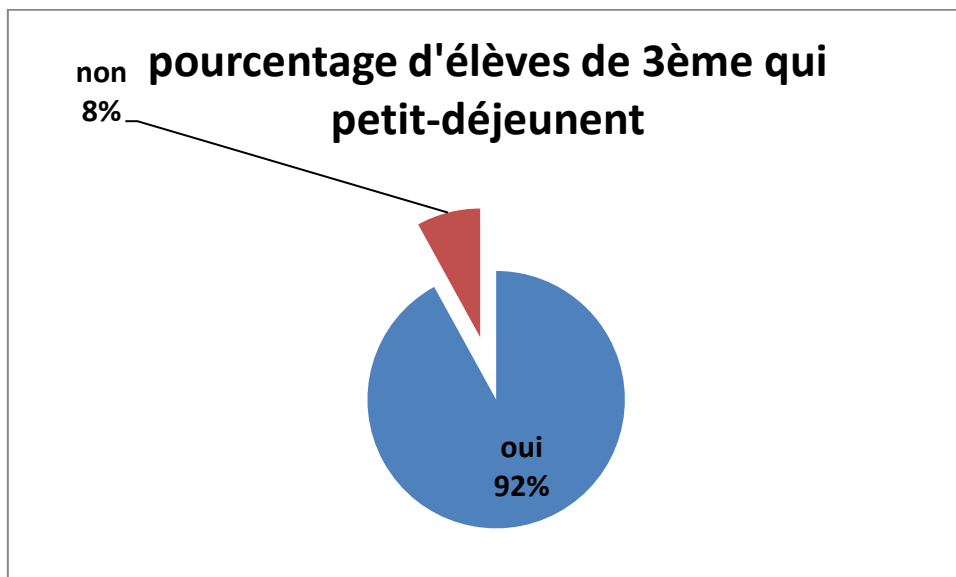


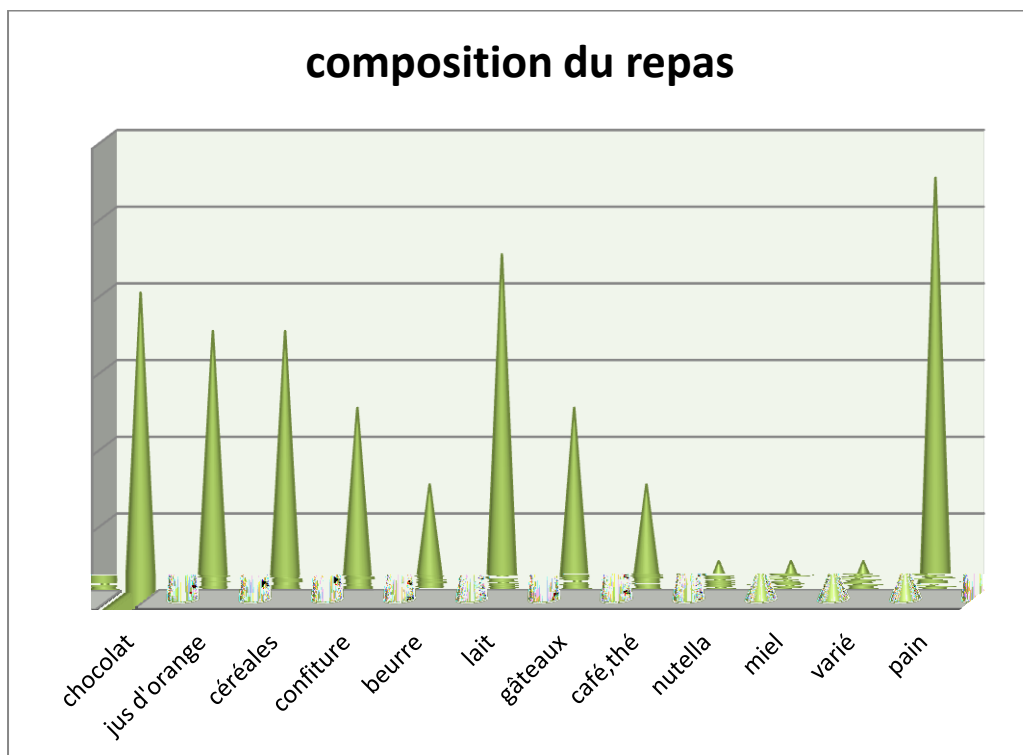
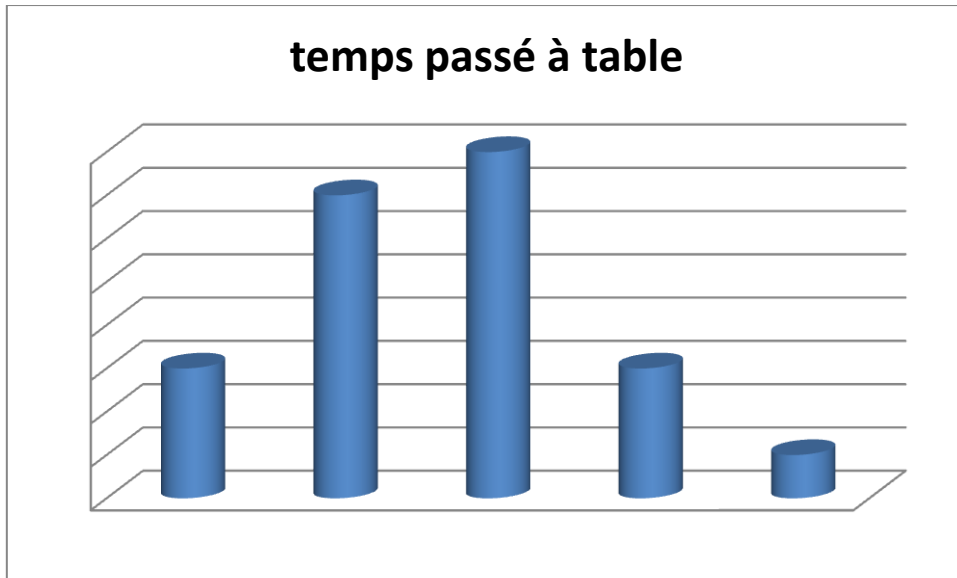
## petit déjeuner idéal pour vous

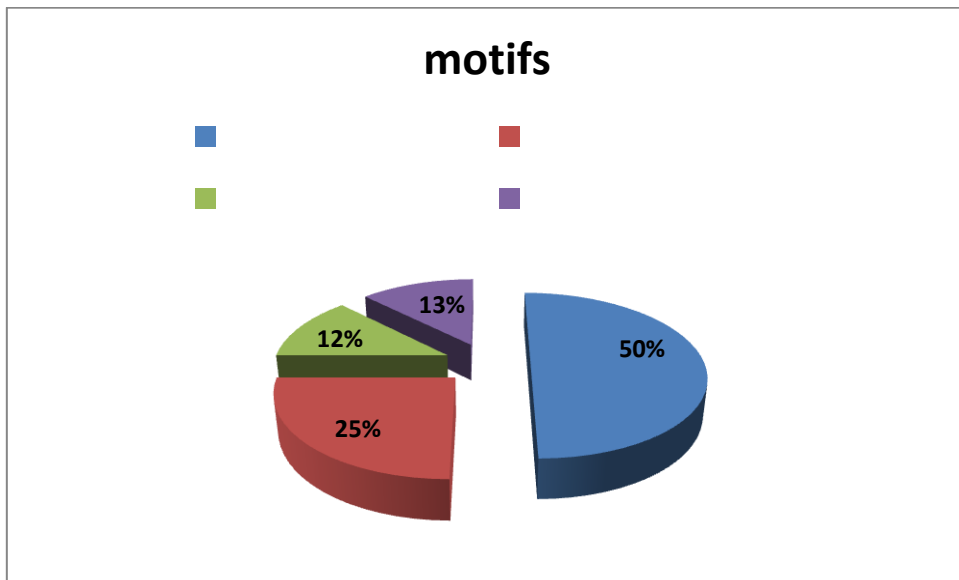
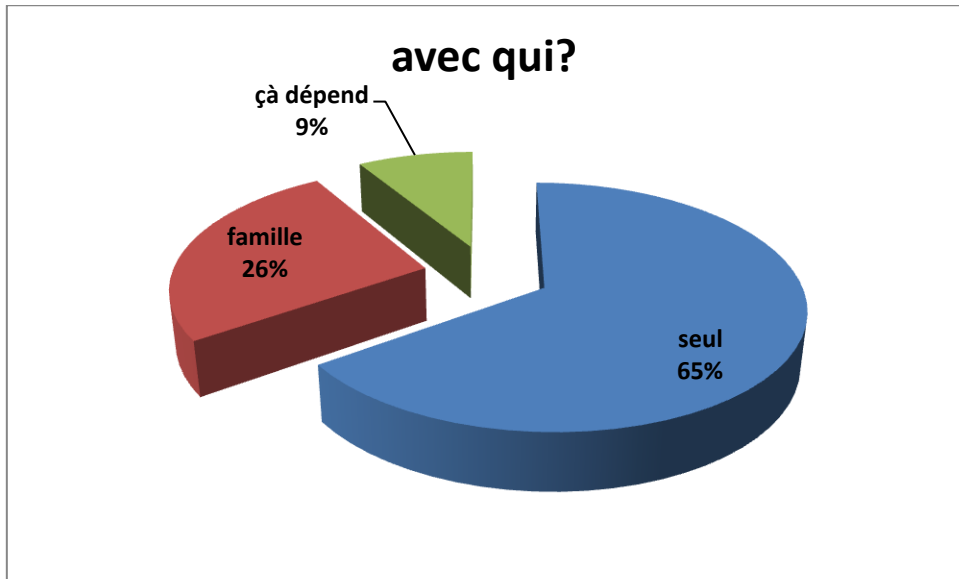


## Durant la semaine de cours:

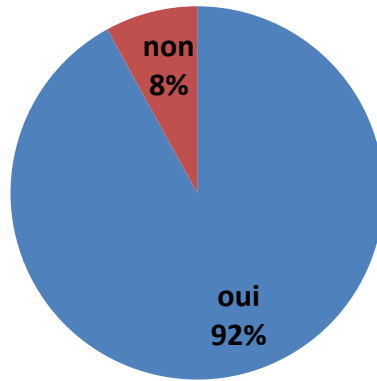
### Le matin prenez-vous un petit déjeuner ?



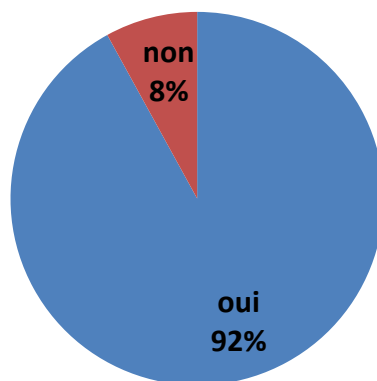


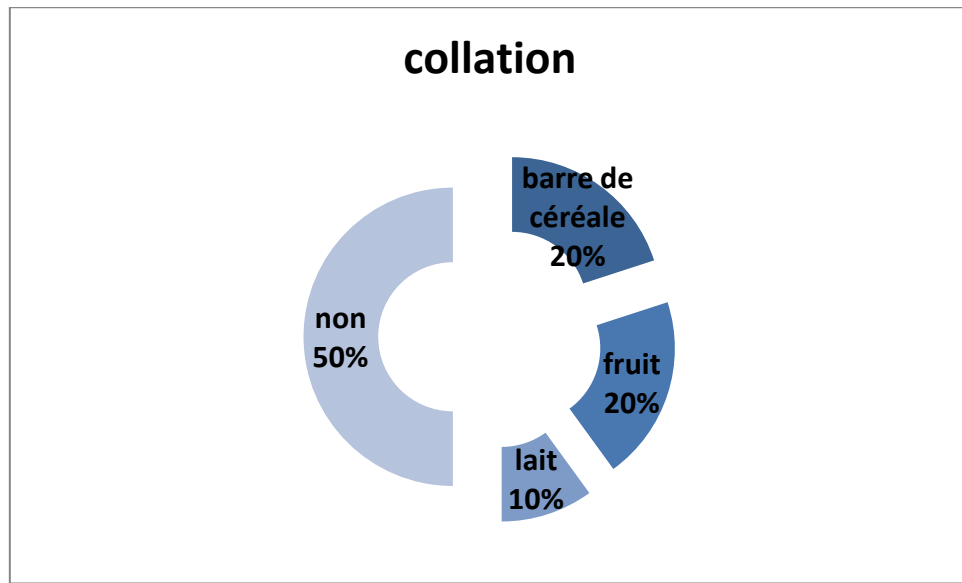


### êtes-vous fatigué ?



### avez-vous faim?





**Quelle est l'intérêt pour vous de prendre un petit déjeuner ?**

---

---

---

---

---

---

---

---

---

---

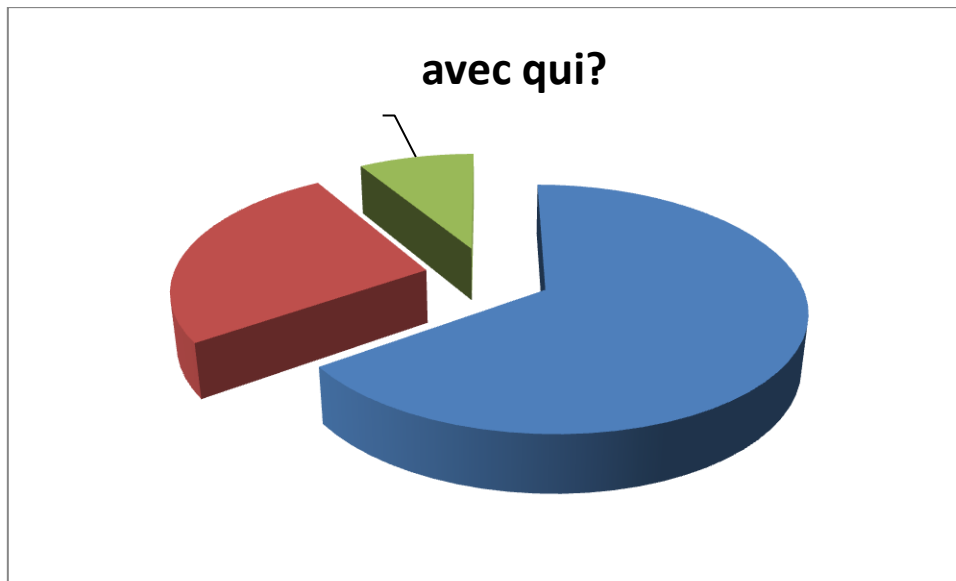
---

---



P ez

cho



**On a plus le temps le week-end : 3**

**On se lève trop tard : 4**

**Observations / Commentaires ?**

